

# SAVE ENERGY WITH ENERGYCORE™ WINDOWS

## THE NEXT GENERATION WINDOW SYSTEM

Now there's a technological vinyl window frame breakthrough that combines with high-performance glass for the most energy-efficient window system available. The new EnergyCore™ Window System uses an innovative, patent-pending, fusion-insulated technology called AirCell™. The result? Virtually no maintenance windows for replacement or new construction projects that exceed Energy Star® performance requirements by up to 50%.

### SINGLE HUNG with TILT SASH

**AIRCELL INSULATED FRAME** provides full insulation in thermally-optimized placement, without voids, to improve insulating performance 15% better than hollow vinyl window frames

**WARM-EDGE INSULATED GLASS** unit improves thermal performance and helps reduce condensation

**INTERLOCKING MEETING RAILS** reduce air and water infiltration while providing added protection from forced entry

**REINFORCED MEETING RAILS** provide superior durability and structural strength (DP-50, up to 40"x63")

**HIGH PERFORMANCE LOWE<sup>3</sup> GLASS STANDARD** provides optimal solar heat gain control to improve interior comfort and energy savings

**LOWER TILT SASH** tilts inward to reach outside glass surfaces for cleaning ease from inside the home

**PRECISION MITERED FUSION-WELDED CORNERS** provide superior structural strength and weather resistance

**COLOR-MATCHED LOCKING HARDWARE** features secure latches that are lead-free

**3-1/4" DEEP WINDOW FRAME** for increased rigidity and thermal performance — also ideal for replacement use

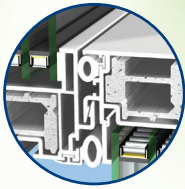
**EASY OPERATING SASH** uses a superior constant force balance unit to operate the sash with ease to any open position

**DUAL WEEP SILL DRAINAGE** carries water away from the window while reducing air and dust penetration

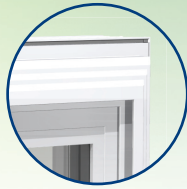
**FULL WINDOW SYSTEM FAMILY** also includes double hung, double slider, picture, casement and awning windows



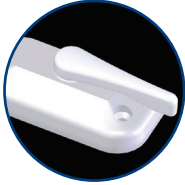
## ENERGYCORE™ FEATURES



Interlocking  
Meeting Rails



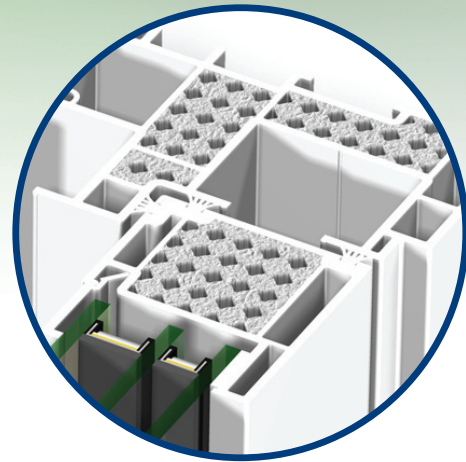
Fusion-Welded  
Corners



Cam Lock  
(Standard)



Auto Lock  
(Optional)



AirCell™  
Insulated Frame

### NFRC VALUES

	Glass	U-Factor	SHGC	VT
R-4	dual: LowE <sup>3</sup> /clear w/argon	.25	.21	.49
R-6	triple: LowE <sup>3</sup> /clear/LowE <sup>3</sup> w/argon	.18	.18	.36
R-7	triple: LowE <sup>3</sup> /clear/LowE <sup>3</sup> w/krypton	.15	.18	.36

### AIR INFILTRATION

.07 cfm/ft<sup>2</sup>

### EGRESS

3<sup>2</sup> x 5<sup>0</sup> minimum

### MIN/MAX SIZES

Minimum = 18" x 24"

Maximum = 48" x 96"

### STANDARD SOLID VINYL COLORS



White



Almond



Adobe

### SuperCapSR™ COLOR



Architectural Bronze  
Exterior

with



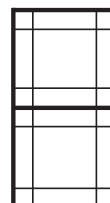
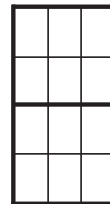
White Solid  
Vinyl Interior

or



Adobe Solid  
Vinyl Interior

\*Printing limitations prevent exact color duplication. Contact your dealer for color samples.



### WINDOW GRID OPTIONS:

3/4" Flat Grid

1" Contour Muntin Grid

(Inquire about our numerous grid patterns available)

### SPECIAL PRIVACY GLASS OPTIONS:

Rain Pattern

P-516 Pattern

Sateen Etched Glass

(Inquire about other specialty glass options available)

### WINDOW SCREENS:

Half-Screen charcoal fiberglass mesh standard

Optional black or mill aluminum mesh

(Full screen option available)

OEM CUSTOMER INFORMATION

**energycore™**  
Fusion Insulated System™