

SAVE ENERGY WITH ENERGYCORE™ WINDOWS

THE NEXT GENERATION WINDOW SYSTEM

Now there's a technological vinyl window frame breakthrough that combines with high-performance glass for the most energy-efficient window system available. The new EnergyCore™ Window System uses an innovative, patent-pending, fusion-insulated technology called AirCell™. The result? Virtually no maintenance windows for replacement or new construction projects that exceed Energy Star® performance requirements by up to 50%.

HORIZONTAL SLIDER

AIRCELL™ INSULATED FRAME provides full thermal insulation without voids to improve insulating performance 15% better than hollow vinyl window frames

WARM-EDGE INSULATED GLASS unit improves thermal performance and helps reduce condensation

INTERLOCKING MEETING RAILS reduce air and water infiltration while providing added protection from forced entry

REINFORCED MEETING RAILS provide superior durability and structural strength

HIGH PERFORMANCE LOWE³ GLASS STANDARD provides optimal solar heat gain control to improve interior comfort and energy savings

EASY GLIDE SASH in XO, OX and XOX CONFIGURATIONS (copy coming)

PRECISION MITERED FUSION-WELDED CORNERS provide superior structural strength and weather resistance

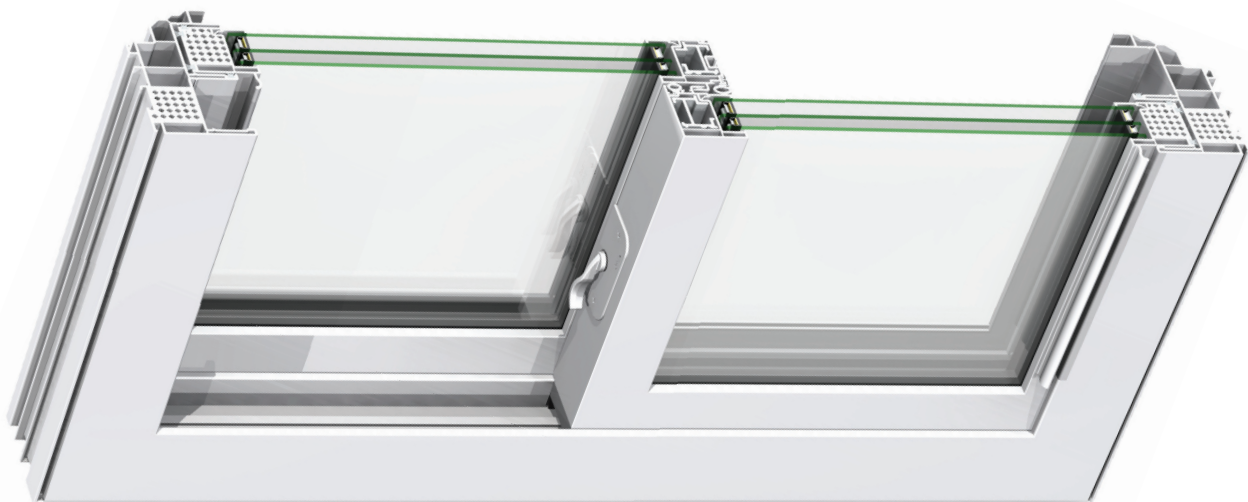
COLOR-MATCHED LOCKING HARDWARE features secure latches that are lead-free

3-1/4" DEEP WINDOW FRAME for increased rigidity and thermal performance — also ideal for replacement use

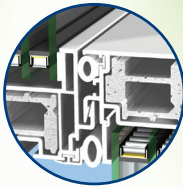
EASY OPERATING SASH BALANCES are a superior constant force design to operate the sash with ease to any open position

DUAL WEEP SILL DRAINAGE carries water away from the window while reducing air and dust penetration

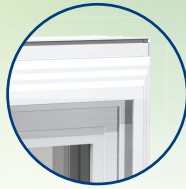
FULL WINDOW SYSTEM FAMILY also includes single hung, double hung, double slider, picture, casement and awning windows



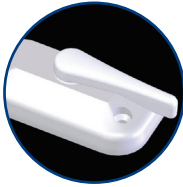
ENERGYCORE™ FEATURES



Interlocking
Meeting Rails



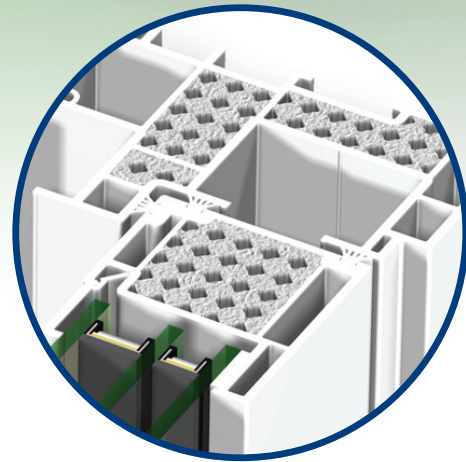
Fusion-Welded
Corners



Cam Lock
(Standard)



Auto Lock
(Optional)



AirCell™
Insulated Frame

NFRC VALUES

	Glass	U-Factor	SHGC	VT
R-4	dual: LowE ³ /clear w/argon	.XX	.XX	.XX
R-6	triple: LowE ³ /clear/LowE ³ w/argon	.XX	.XX	.XX
R-7	triple: LowE ³ /clear/LowE ³ w/krypton	.XX	.XX	.XX

AIR INFILTRATION

.xx cfm/ft²

EGRESS

x^x x x^x minimum

MIN/MAX SIZES

Minimum = xx" x xx"

Maximum = xx" x xx"

STANDARD SOLID VINYL COLORS



White

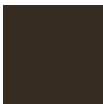


Almond



Adobe

SuperCapSR™ COLOR



Architectural Bronze
Exterior

with



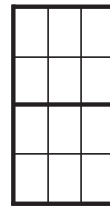
White Solid
Vinyl Interior

or



Adobe Solid
Vinyl Interior

*Printing limitations prevent exact color duplication. Contact your dealer for color samples.



WINDOW GRID OPTIONS:

3/4" Flat Grid

1" Contour Muntin Grid

(Inquire about our numerous grid patterns available)

SPECIAL PRIVACY GLASS OPTIONS:

Rain Pattern

P-516 Pattern

Sateen Etched Glass

(Inquire about other specialty glass options available)

WINDOW SCREENS:

Half-Screen charcoal fiberglass mesh standard

Optional black or mill aluminum mesh

(Full screen option available)

OEM CUSTOMER INFORMATION

energycore™
Fusion Insulated System™