

# SAVE ENERGY WITH ENERGYCORE™ WINDOWS

## THE NEXT GENERATION WINDOW SYSTEM

Now there's a technological vinyl window frame breakthrough that combines with high-performance glass for the most energy-efficient window system available. The new EnergyCore™ Window System uses an innovative, patent-pending, fusion-insulated technology called AirCell™. The result? Virtually no maintenance windows for replacement or new construction projects that exceed Energy Star® performance requirements by up to 50%.

### DOUBLE SLIDER

**AIRCELL™ THERMALLY OPTIMIZED FRAME** provides greater efficiency without voids and improves insulating performance 15% better than hollow vinyl window frames

**WARM-EDGE INSULATED GLASS** unit improves thermal performance and helps reduce condensation

**HIGH PERFORMANCE LOWE<sup>3</sup> GLASS STANDARD** provides optimal solar heat gain control to improve interior comfort and energy savings

**INTERLOCKING MEETING RAILS** reduce air and water infiltration while providing added forced entry protection

**REINFORCED MEETING RAILS** provide superior durability and structural strength

**PRECISION MITERED FUSION-WELDED CORNERS** provide superior structural strength and weather resistance

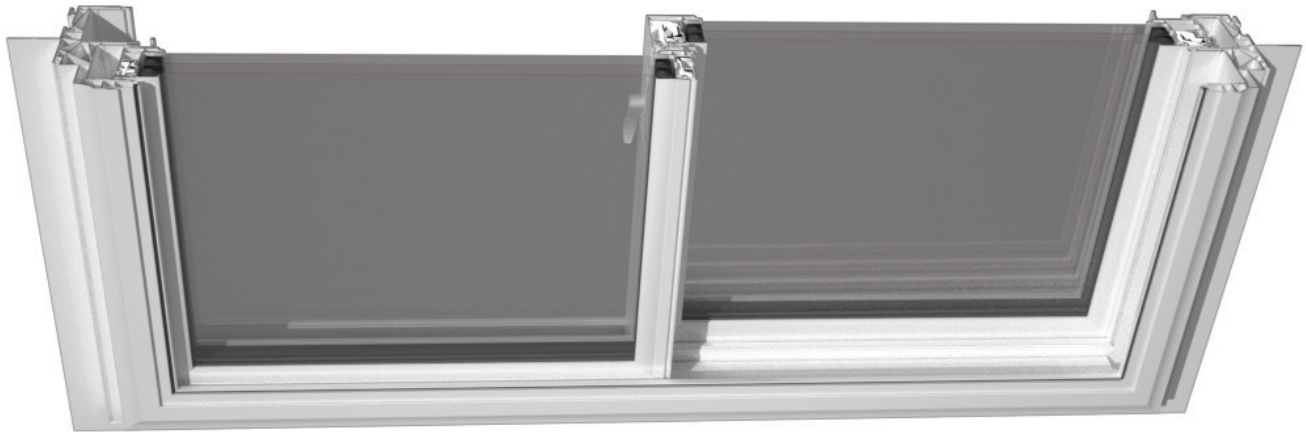
**COLOR-MATCHED LOCKING HARDWARE** features secure latches that are lead-free

**3-1/4" DEEP WINDOW FRAME** for increased rigidity and thermal performance — also ideal for replacement use

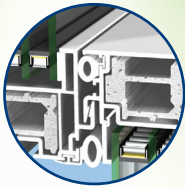
**EASY OPERATING SASHES** glide on a raised monorail track

**DUAL WEEP SILL DRAINAGE** carries water away from the window while reducing air and dust penetration

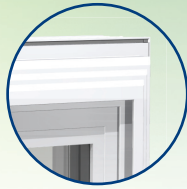
**FULL WINDOW SYSTEM FAMILY** also includes single hung, double hung, double slider, picture, casement and awning windows



# ENERGYCORE™ FEATURES



Interlocking Meeting Rails



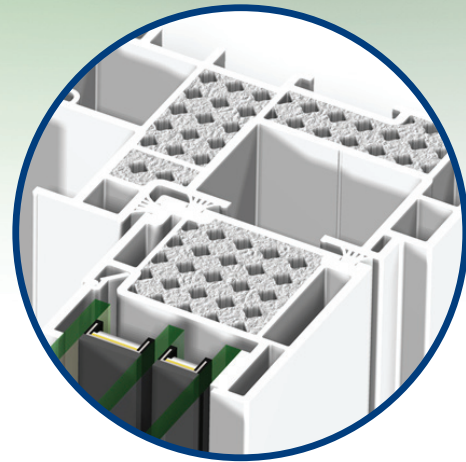
Fusion-Welded Corners



Cam Lock (Standard)



Auto Lock (Optional)



AirCell™ Insulated Frame

## NFRC VALUES

	Glass	U-Factor	SHGC	VT
R-4	dual: LowE <sup>3</sup> /clear w/argon	.xx	.xx	.xx
R-6	triple: LowE <sup>3</sup> /clear/LowE <sup>3</sup> w/argon	.xx	.xx	.xx
R-7	triple: LowE <sup>3</sup> /clear/LowE <sup>3</sup> w/krypton	.xx	.xx	.xx

## AIR INFILTRATION

.xx cfm/ft<sup>2</sup>

## EGRESS

x<sup>x</sup> x x<sup>x</sup> minimum

## MIN/MAX SIZES

Minimum = xx" x xx"

Maximum = xx" x xx"

## STANDARD SOLID VINYL COLORS



White

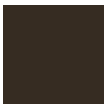


Almond



Adobe

## SuperCapSR™ COLOR



Architectural Bronze Exterior

with



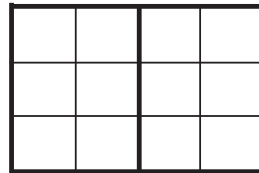
White Solid Vinyl Interior

or



Adobe Solid Vinyl Interior

\*Printing limitations prevent exact color duplication. Contact your dealer for color samples.

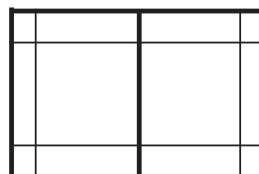


## WINDOW GRID OPTIONS:

3/4" Flat Grid

1" Contour Muntin Grid

(Inquire about our numerous grid patterns available)



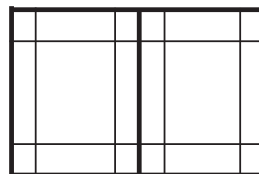
## SPECIAL PRIVACY GLASS OPTIONS:

Rain Pattern

P-516 Pattern

Sateen Etched Glass

(Inquire about other specialty glass options available)



## WINDOW SCREENS:

Charcoal fiberglass mesh standard

Optional black or mill aluminum mesh

(Full screen option available)

OEM CUSTOMER INFORMATION

**energycore™**  
Fusion Insulated System™